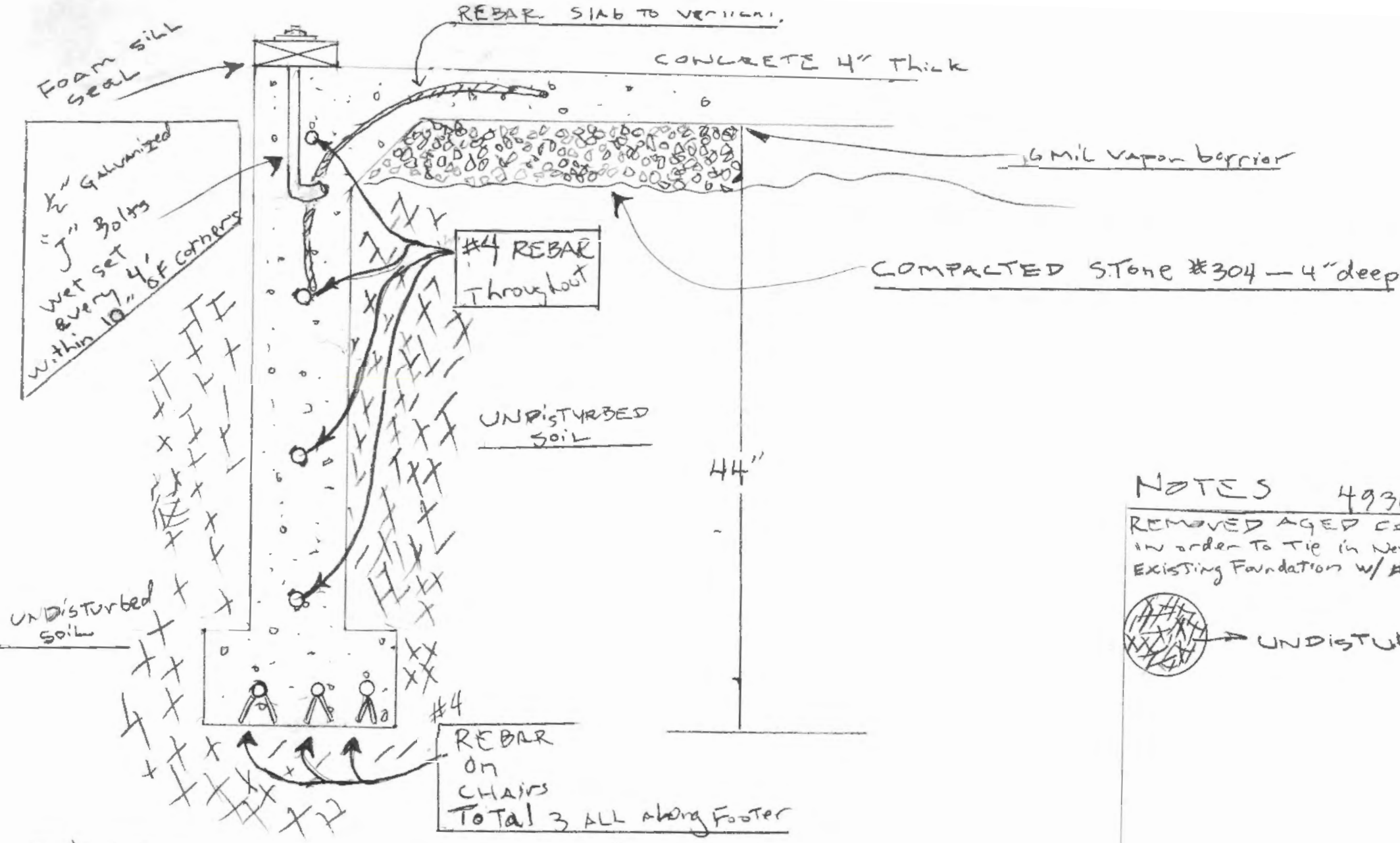


4938 POSTLEWATE RD  
 3/16" = 1' CONCRETE FLOOR



NOTES 4936 POSTLWAITE RD

REMOVED AGED CONCRETE FLOOR  
IN ORDER TO TIE IN NEW SLAB TO  
EXISTING FOUNDATION W/ #4 REBAR AND EPOXY.



CONCRETE MONOLITHIC  
4500 PSI 3% AIR  
RESIDENTIAL FIBER

ALL HEADERS

Adhesive #16<sup>#</sup> nailed



Double plate

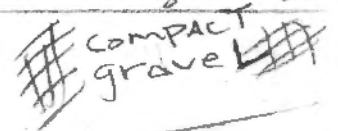


Foundation Bolts  
 SEE DETAIL ON Foundation VIEW

ACR PLATE (TREATED)

SEAL

4" Concrete Floor



UNDISTURBED EARTH

WINDOW/DOOR VIEW  
 4936 POSTLEWATE  
 WALL STUDS 16" ON CENTE.  
 SOUTHWALL GARAGE

SYP  
2x6  
WALL  
STUD

2x6 Sill Plate

Foam Sill  
Seal

CONCRETE 4" THICK

1/2" Galvanized  
"J" Bolts  
wet set  
every 10" @ corners

#4 REBAR  
throughout

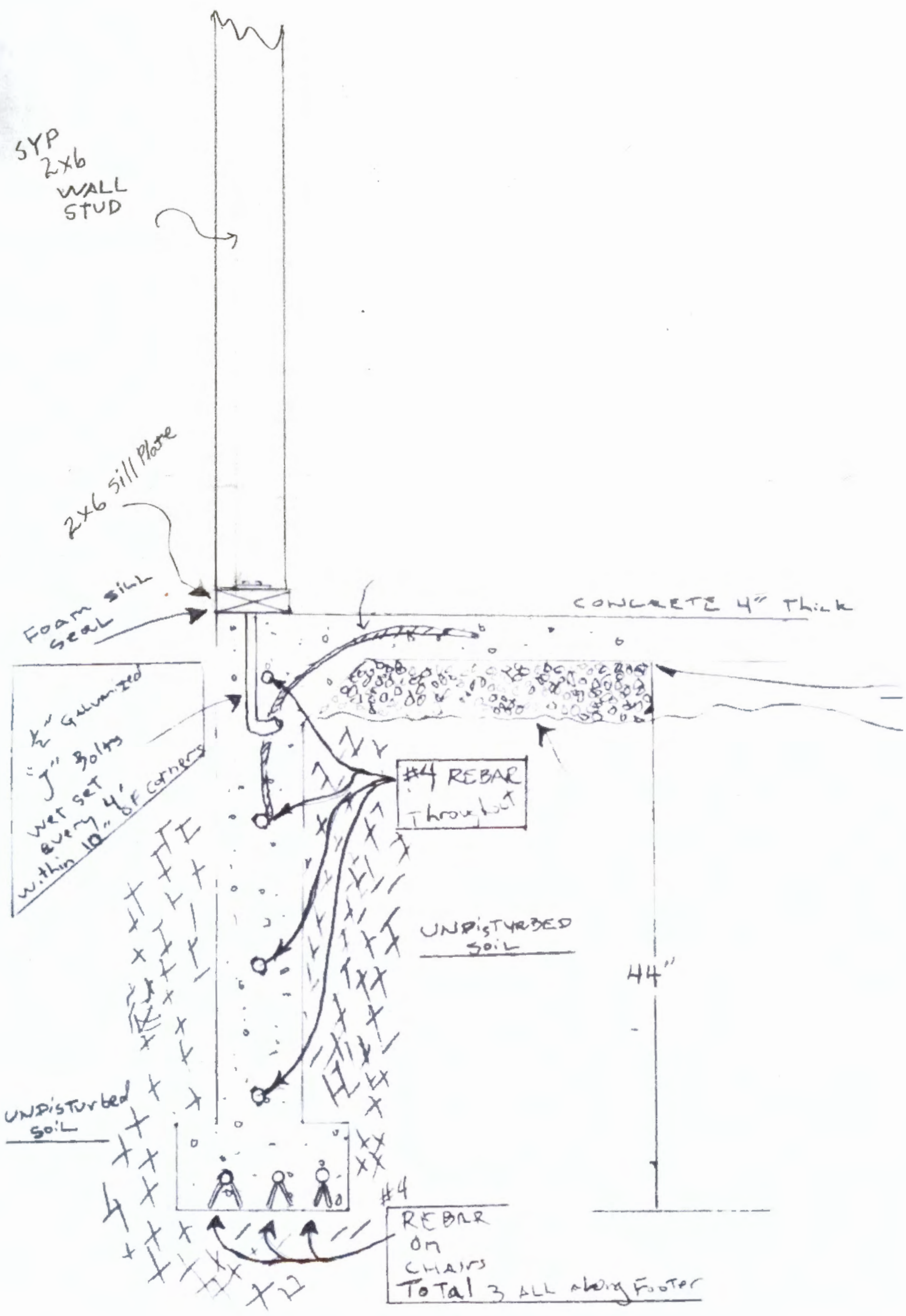
UNDISTURBED  
SOIL

UNDISTURBED  
SOIL

44"

#4  
REBAR  
on  
CHAIRS  
TOTAL 3 ALL along Footer

FOUNDATION Detail  
WALL TO PLATE



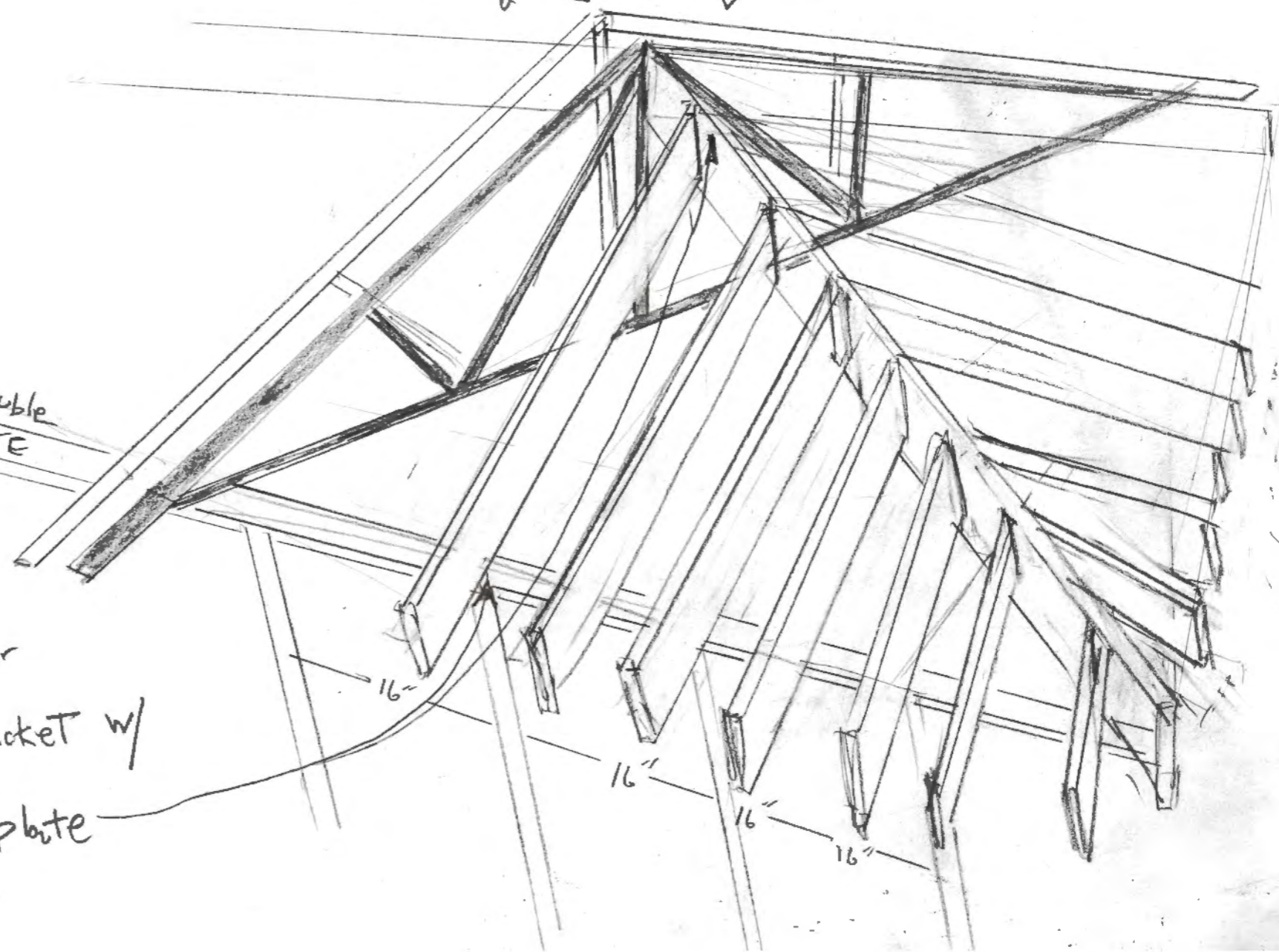
TRUSS TO Hip over garage

Point of  
Mirror Image  
Double Fink TRUSS Before Hip  
NAILED w/FULL HEAD #16

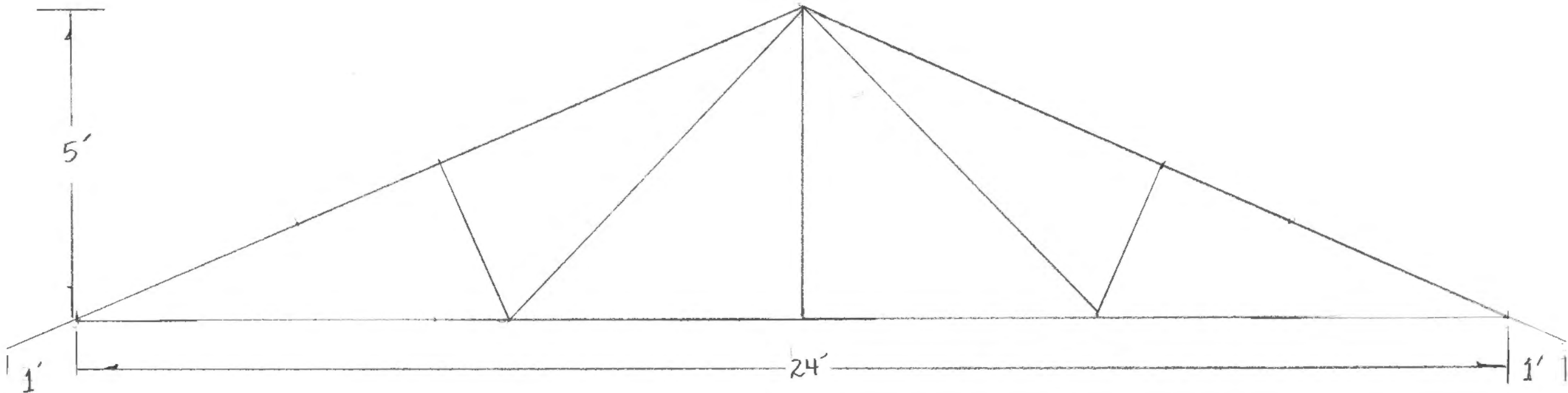
\* NOT TO SCALE  
\* NOT SHOWING ALL Hip RAFTERS

TOP of Double  
WALL PLATE

\* Hip RAFTERS 16" ON CENTER  
\* SYP STICK HIP  
\* STRONG TIE METAL BRACKET w/  
Required nails  
AT Ridge board & wall plate



5/12 Pitch



TRUSSES EVERY 16"  
Doubled @ HIP ENDS

4938 POSTLEWAITER RD  
FINK TRUSS 5/12 PITCH

REPLACED FLOOR  
Joists where missing  
Completing Floor

\* HIGH STRENGTH  
STRUCTURAL EPOXY  
\* 3 Boards Thick 2x8"  
STAGGERED

min 1/2"

min 1/2"

7/4"

2' Long 3/8 mill STEEL  
SADDLE BRACKET  
TO DISTRIBUTE POST LOAD

CENTER  
BEAM

TRIANGULATED  
DOT PATTERN

1/2" Galvanized w/  
WASHER & CHAMFER LOCK

11.5"

EVER OTHER JOIST IS DOUBLED  
FULL WIDTH  
OF HOUSE

Top Soid

2" x 8" STP FLOOR JOIST

EXISTING  
8" x 16"  
CMU

ALL JOISTS  
END NAILED  
Solid blocking

SIMSON  
RAFTER  
HANGER

ELLIS  
STL-19HD  
48,000 lbs

SADDLE  
BRACKET

RANDOM FLOOR JOIST REPLACEMENT  
JOISTS 16" OC

EXISTING

